

# No. 60 $\frac{3}{4}$ " Pitch – QD®

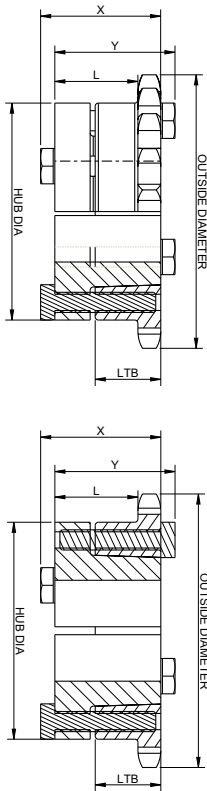


60 QD®  $\frac{3}{4}$ " Pitch

Pitch	Inner width	Roller- Ø
inch	inch	inch
$\frac{3}{4}$ "	$\frac{1}{2}$ "	.469"

QD® is a registered trademark of Emerson Power Transmission Manufacturing, L.P.

Sprockets supplied without keyway and setscrews unless specifically requested.



No. Teeth	Outside Diameter	Pitch Diameter	Catalog Number	Bushing	Max. Bore	Type	Hub Dia.	LTB	X	Y	L	Wt. Lbs.
11	3.005	2.663	60JA11	JA	1 $\frac{1}{4}$	B	2 $\frac{1}{16}$	$\frac{5}{8}$	1 $\frac{1}{8}$	1 $\frac{1}{8}$	$\frac{35}{64}$	.46
12	3.249	2.898	60JA12	JA	1 $\frac{1}{4}$	B	2 $\frac{1}{16}$	$\frac{5}{8}$	1 $\frac{1}{8}$	1 $\frac{1}{8}$	$\frac{35}{64}$	.60
13	3.493	3.134	60JA13	JA	1 $\frac{1}{4}$	B	2 $\frac{1}{16}$	$\frac{5}{8}$	1 $\frac{1}{8}$	1 $\frac{1}{8}$	$\frac{35}{64}$	.76
14	3.736	3.371	60SH14	SH	1 $\frac{5}{8}$	B	2 $\frac{11}{16}$	$\frac{13}{16}$	1 $\frac{7}{16}$	1 $\frac{7}{16}$	$\frac{51}{64}$	.88
15	3.978	3.608	60SH15	SH	1 $\frac{5}{8}$	B	2 $\frac{11}{16}$	$\frac{13}{16}$	1 $\frac{7}{16}$	1 $\frac{7}{16}$	$\frac{51}{64}$	1.08
16	4.220	3.845	60SH16	SH	1 $\frac{5}{8}$	B	2 $\frac{11}{16}$	$\frac{13}{16}$	1 $\frac{7}{16}$	1 $\frac{7}{16}$	$\frac{51}{64}$	1.26
17	4.462	4.082	60SDS17	SDS	2	B	3 $\frac{3}{16}$	$\frac{3}{4}$	1 $\frac{1}{2}$	1 $\frac{1}{2}$	$\frac{55}{64}$	1.38
18	4.703	4.319	60SDS18	SDS	2	B	3 $\frac{3}{16}$	$\frac{3}{4}$	1 $\frac{1}{2}$	1 $\frac{1}{2}$	$\frac{55}{64}$	1.56
19	4.945	4.557	60SDS19	SDS	2	B	3 $\frac{3}{16}$	$\frac{3}{4}$	1 $\frac{1}{2}$	1 $\frac{1}{2}$	$\frac{55}{64}$	1.76
20	5.186	4.794	60SDS20	SDS	2	B	3 $\frac{3}{16}$	$\frac{3}{4}$	1 $\frac{1}{2}$	1 $\frac{1}{2}$	$\frac{55}{64}$	2.00
21	5.426	5.033	60SDS21	SDS	2	B	3 $\frac{3}{16}$	$\frac{3}{4}$	1 $\frac{1}{2}$	1 $\frac{1}{2}$	$\frac{55}{64}$	2.20
22	5.666	5.270	60SDS22	SDS	2	B	3 $\frac{3}{16}$	$\frac{3}{4}$	1 $\frac{1}{2}$	1 $\frac{1}{2}$	$\frac{55}{64}$	2.44
23	5.907	5.508	60SDS23	SDS	2	B	3 $\frac{3}{16}$	$\frac{3}{4}$	1 $\frac{1}{2}$	1 $\frac{1}{2}$	$\frac{55}{64}$	2.70
24	6.147	5.746	60SDS24	SDS	2	B	3 $\frac{3}{16}$	$\frac{3}{4}$	1 $\frac{1}{2}$	1 $\frac{1}{2}$	$\frac{55}{64}$	2.94
25	6.387	5.984	60SDS25	SDS	2	B	3 $\frac{3}{16}$	$\frac{3}{4}$	1 $\frac{1}{2}$	1 $\frac{1}{2}$	$\frac{55}{64}$	3.24
26	6.627	6.222	60SK26	SK	2 $\frac{5}{8}$	B	3 $\frac{7}{8}$	1 $\frac{1}{4}$	2 $\frac{1}{8}$	2 $\frac{1}{8}$	1 $\frac{27}{64}$	4.18
27	6.867	6.461	60SK27	SK	2 $\frac{5}{8}$	B	3 $\frac{7}{8}$	1 $\frac{1}{4}$	2 $\frac{1}{8}$	2 $\frac{1}{8}$	1 $\frac{27}{64}$	4.52
28	7.106	6.698	60SK28	SK	2 $\frac{5}{8}$	B	3 $\frac{7}{8}$	1 $\frac{1}{4}$	2 $\frac{1}{8}$	2 $\frac{1}{8}$	1 $\frac{27}{64}$	4.72
30	7.586	7.175	60SK30	SK	2 $\frac{5}{8}$	B	3 $\frac{7}{8}$	1 $\frac{1}{4}$	2 $\frac{1}{8}$	2 $\frac{1}{8}$	1 $\frac{27}{64}$	5.34
32	8.065	7.652	60SK32	SK	2 $\frac{5}{8}$	B	3 $\frac{7}{8}$	1 $\frac{1}{4}$	2 $\frac{1}{8}$	2 $\frac{1}{8}$	1 $\frac{27}{64}$	6.10
35	8.783	8.367	60SK35	SK	2 $\frac{5}{8}$	B	3 $\frac{7}{8}$	1 $\frac{1}{4}$	2 $\frac{1}{8}$	2 $\frac{1}{8}$	1 $\frac{27}{64}$	7.42
36	9.023	8.606	60SK36	SK	2 $\frac{5}{8}$	B	3 $\frac{7}{8}$	1 $\frac{1}{4}$	2 $\frac{1}{8}$	2 $\frac{1}{8}$	1 $\frac{27}{64}$	7.70
40	9.980	9.560	60SK40	SK	2 $\frac{5}{8}$	B	3 $\frac{7}{8}$	1 $\frac{1}{4}$	2 $\frac{1}{8}$	2 $\frac{1}{8}$	1 $\frac{27}{64}$	9.56
42	10.458	10.037	60SF42	SF	2 $\frac{15}{16}$	B	4 $\frac{5}{8}$	1 $\frac{1}{4}$	2 $\frac{1}{4}$	2 $\frac{1}{4}$	1 $\frac{35}{64}$	10.78
45	11.176	10.752	60SF45	SF	2 $\frac{15}{16}$	B	4 $\frac{5}{8}$	1 $\frac{1}{4}$	2 $\frac{1}{4}$	2 $\frac{1}{4}$	1 $\frac{35}{64}$	12.40
48	11.893	11.468	60SF48	SF	2 $\frac{15}{16}$	B	4 $\frac{5}{8}$	1 $\frac{1}{4}$	2 $\frac{1}{4}$	2 $\frac{1}{4}$	1 $\frac{35}{64}$	14.26
54	13.327	12.889	60SF54	SF	2 $\frac{15}{16}$	B	4 $\frac{5}{8}$	1 $\frac{1}{4}$	2 $\frac{1}{4}$	2 $\frac{1}{4}$	1 $\frac{35}{64}$	17.02
60	14.761	14.330	60SF60	SF	2 $\frac{15}{16}$	B	4 $\frac{5}{8}$	1 $\frac{1}{4}$	2 $\frac{1}{4}$	2 $\frac{1}{4}$	1 $\frac{35}{64}$	20.76
70	17.150	16.717	60SF70	SF	2 $\frac{15}{16}$	B	4 $\frac{5}{8}$	1 $\frac{1}{4}$	2 $\frac{1}{4}$	2 $\frac{1}{4}$	1 $\frac{35}{64}$	28.60
72	17.628	17.195	60SF72	SF	2 $\frac{15}{16}$	B	4 $\frac{5}{8}$	1 $\frac{1}{4}$	2 $\frac{1}{4}$	2 $\frac{1}{4}$	1 $\frac{35}{64}$	29.58
80	19.539	19.103	60SF80	SF	2 $\frac{15}{16}$	B	4 $\frac{5}{8}$	1 $\frac{1}{4}$	2 $\frac{1}{4}$	2 $\frac{1}{4}$	1 $\frac{35}{64}$	38.24
84	20.495	20.058	60SF84	SF	2 $\frac{15}{16}$	B	4 $\frac{5}{8}$	1 $\frac{1}{4}$	2 $\frac{1}{4}$	2 $\frac{1}{4}$	1 $\frac{35}{64}$	40.94
96	23.360	22.922	60SF96	SF	2 $\frac{15}{16}$	B	4 $\frac{5}{8}$	1 $\frac{1}{4}$	2 $\frac{1}{4}$	2 $\frac{1}{4}$	1 $\frac{35}{64}$	52.40
112	27.181	26.741	60E112	E	3 $\frac{1}{2}$	B	6	1 $\frac{5}{8}$	2 $\frac{15}{16}$	2 $\frac{15}{16}$	2 $\frac{3}{16}$	73.76

### QD® Bushings

Bushing	Bore Range		No Keyway	Wt. Lbs.
	Standard Keyway	Shallow Keyway		
JA	$\frac{1}{2}$ – 1	$\frac{1}{16}$ – 1 $\frac{3}{16}$	1 $\frac{1}{4}$	.80
SH	$\frac{1}{2}$ – 1 $\frac{3}{8}$	$\frac{7}{16}$ – 1 $\frac{5}{8}$	1 $\frac{11}{16}$	.70
SDS	$\frac{1}{2}$ – 1 $\frac{11}{16}$	$\frac{3}{4}$ – 1 $\frac{15}{16}$	2	1.00
SK	$\frac{1}{2}$ – 2 $\frac{1}{8}$	2 $\frac{3}{16}$ – 2 $\frac{1}{2}$	2 $\frac{9}{16}$ – 2 $\frac{5}{8}$	2.10
SF	$\frac{1}{2}$ – 2 $\frac{3}{16}$	2 $\frac{3}{8}$ – 2 $\frac{13}{16}$	2 $\frac{13}{16}$ – 2 $\frac{15}{16}$	3.10
E	$\frac{1}{2}$ – 2 $\frac{7}{8}$	2 $\frac{15}{16}$ – 3 $\frac{1}{2}$	—	7.10

Some sizes are Made-To-Order, consult iwis for availability.